

Perspectives

The Pastel Society of Colorado Members Show

August 12 – October 7, 2022

Show Location: The Great Frame Up, 430 Main Street,
Longmont CO

Gallery Info: 303-772-7293 |

<https://longmont.thegreatframeup.com/>

Perspective is technically the art of drawing or painting on a plane or curved surface the spatial relation of objects as they might appear to the eye. But more importantly, it also represents the artist's point of view and how they see things in the world they inhabit. This show will display the wide-ranging perspectives artists have no matter where they are in their pastel art journey. Submission for the show is not juried and is open to all current PSC members.

SCHEDULE OF EVENTS:

Call for entries opens: May 01, 2022

Deadline for entries: July 31, 2022 (by midnight)

Drop-off: August 9-10 10:30am – 3:00 pm (Hanging: August 11)

Deadline for shipped work: Artwork to arrive the week prior to August 10

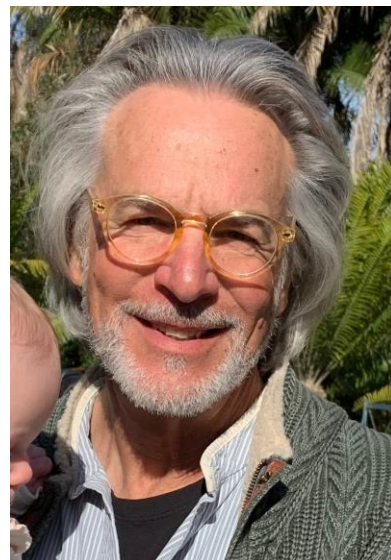
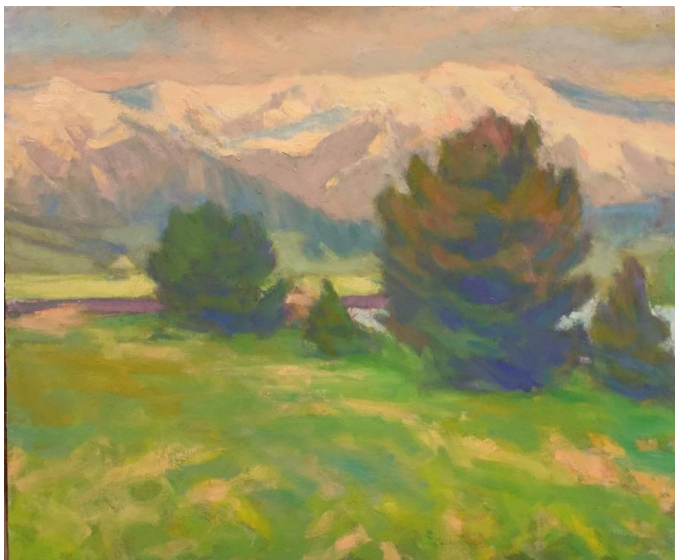
Show Opening and Reception: Friday, August 12, 5:00pm – 8:00pm (Awards Presentation at 6:30pm)

Show Ends: Friday, October 7, 2022

Artwork Pick-up: Saturday, October 8, 10:30am – 3:00pm

AWARDS JUDGE: The Pastel Society of Colorado is pleased to present the show's awards judge, **Chuck Ceraso**.

All awards are made at the discretion of our judge. All awards will be final with no exchanges or substitutions.



ABOUT CHUCK CERASO:

Chuck Ceraso studied painting and sculpting at the University of Notre Dame and painting with Henry Hensche, the well known painter and teacher of the Cape School in Provincetown, MA. Hensche taught for over 60 years until his death in 1991.

Chuck has been a sought after instructor at the Denver Art Museum, the Art Students League of Denver and the Arvada Center for the Arts and Humanities for many years. He also holds ongoing classes in his gallery and studio in Lafayette, CO. His work can be found in public and private collections throughout the U.S. and Europe.

I have been fascinated with painting from the actual experience of sight as opposed to painting from a set of rules or theories as taught by many artists. Using the principles of seeing that I learned from Henry, I continue to discover a fresh vision of the world as simply an arrangement of colored shapes. Science has verified that color vision is a much more complex and fascinating phenomenon than any theory or formula can ever predict.

Painting can be about much more than making pictures. It can be a means of seeing the world and ourselves with new eyes. It can be a process of endless revelation for both the artist and the viewer. -- Chuck Ceraso

www.cerasogallery.com

ENTRY FEE: Up to two (2) paintings may be submitted at a fee of \$36.00. The entry fee is non-refundable and paid at the time of entry.

ELIGIBILITY:

Perspectives Member Show is open to any pastel artist that is a Member of PSC.

- Work must be original and from your own reference, not copied from other artists or published materials.
- Any reference provided by an instructor is not eligible, including an instructor-provided photo, still life setup or model setup.
- All artwork must be originally drawn/painted and not created over the top of any type of photographic image or print.
- If used in your paintings, collage materials must be created by the artist.
- Artwork's final surface must be predominantly (80%) traditional dry pastel.
- Works must be in dry pastel. No oil pastels. Mixed media must be predominantly dry pastel.
- Work done under supervision in a class or workshop is not eligible.
- Paintings must have been completed within the last two years and not previously shown in any Pastel Society of Colorado exhibitions. Any painting identified as shown previously in a PSC exhibition will be rejected OR, if discovered after judging, will remain

in the exhibition but not be eligible for any awards. The artist will also be prohibited from entering future PSC sponsored shows for one year.

- If artwork submitted into the show is not delivered, then the artist will be prohibited from entering future PSC sponsored shows for one year.
- Artwork must not exceed 42 inches (including frame). **Please Note:** If there are more artworks submitted than the gallery space can accommodate, we will only accept one artwork from each artist.

DIRECTIONS FOR ENTERING:

Step 1: Go to PSC Show and Events page: www.pastelsocietyofcolorado.org/shows.php. Go to **Perspectives Show** listing.

Step 2: Hit the **REGISTER AND PAY** button at the bottom of **PERSPECTIVES** listing.

Step 3: **FILL OUT THE REGISTRATION FORM.** This form is considered a contract and must be completed and accurately filled out with all requested information regarding the paintings and the artist. When filling out your submission information, please be sure all information is correct-including spelling, title and pricing of your paintings. No changes to this information will be accepted after submitting this form.

Step 4: **PREPARE YOUR IMAGES.** The images must be formatted according to the following specifications:

-File Format: jpg (jpeg only)

-FILE DIMENSIONS; The image should be 1920 pixels on the longest side at 72 dpi, sRGB color space.

-Name the jpg file: The file must be labeled with PE. followed by the first four (4) letters of your last name, the first four (4) letters of your first name and the entry number (i.e., David Jones 1st entry - the image file would be PE.JONEDAVI1.jpeg, the 2nd entry would be PE.JONEDAVI2.jpeg).

Step 5: **BROWSE TO FIND YOUR IMAGES TO ATTACH THEM TO THE ENTRY FORM.**

Step 6: **SUBMIT THE FORM** (it will send your information to [perspectivechairs @pscshows.com](mailto:perspectivechairs@pscshows.com))

Step 7: **ENTER YOUR PAYMENT INFORMATION.**

FRAMING AND PRESENTATION:

- Artwork must be delivered framed, glazed and ready to hang to gallery standards.
- Artwork does not need a mat. If a mat is used, a neutral hue is preferred, but not required.
- Artwork may be floated on black or white mats.
- Liners or fillets should be no larger than 1 inch.
- Artworks must be ready to hang with secure D-rings and wiring.

- No saw tooth hangers.
- Artwork not meeting these standards will not be accepted.

DELIVERY OF ARTWORK:

Shipping: Artworks may be shipped to The Great Frame Up a week prior to August 10, 2022 at the following address:

430 Main Street, Longmont, CO 80501

Attention: PSC Members Show

- Include the name of the artist, address, phone number, email, title of painting, and the price on the back of the painting.
- Please pack work carefully and include a pre-paid return shipping label and insure it adequately. PSC is not responsible for payment of the return shipment.
- The artist will be contacted if the work arrives damaged so that arrangements can be made to repair or re-frame.
- Artists are responsible for the cost of repair or re-frame and will be billed directly by the framer.

Hand Delivery: August 9-10, 2022, 10:30 am-3:00pm, 430 Main Street, Longmont, CO 80501.

Free parking is available in the back parking lot or at the front along the street. Include the name of the artist, address, phone number, email, title of painting, and the price on the back of the painting. West Slope members may make arrangements with their local representative and show co-chairs to deliver artwork to The Great Frame Up on the drop off date.

SALES:

All artwork submitted must be for sale. There will be a 35% commission retained (30% to The Great Frame Up and 5% to PSC). The Great Frame Up will handle all sales and sales tax. Sales will be reconciled at the end of the show. Artists will be paid their commission check by the 15th day of the month following the close of the show. International Award Winners need to be able to accept either a US check or a PayPal transfer payment and are responsible for all currency exchange rate fees and processing charges incurred.

LIABILITY: Utmost care will be taken in handling the entries. However, neither PSC and its show chairs nor the venue (The Great Frame Up) is responsible for loss or damage. The cost of insurance is the artist's responsibility.

Co-Chairs Contact Info:

Xenia Sease – xjsease@gmail.com or 303-261-5153

Pamm Iannazzo – pamm.iannazzofineart@gmail.com or 303-823-2409